

Awards

Associate Degree: Computer-Integrated Machining (A50210)
Length of Program: 5 Semesters
Prerequisite: High School Diploma, Placement Test Equivalent

Diploma: Manual Machining (D50210)
Length of Program: 3 Semesters
Prerequisite: High School Diploma, Placement Test Equivalent

Certificate: Basic Computer-Integrated Machining Certificate (C50210C1)
Length of Program: 4 Semesters
Prerequisite: High School Diploma, Placement Test Equivalent

Certificate: Basic Computer-Integrated Machining Certificate (C50210H1)
Length of Program: 4 Semesters
Prerequisite: Placement Test Equivalent

Other Important Information

Application Deadlines: The program is designed for a student to enter during the fall semester. A student may enter at other times with approval of the Department Chairperson.

Scholarship/Title IV Financial Aid/VA Services: Scholarships/Title IV Financial Aid/Veteran's assistance may be available for associate degrees. Certificates and diplomas that fall under this program/area of study **may or may not be eligible** for Scholarship/Title IV Financial Aid/VA Services. Please contact the Financial Aid Office, Student Center, Room 2; Telephone (910) 678-8242. Veterans Services, General Classroom Building, Room 202, (910) 678-8580.



Program Information Contact

Curriculum Chairperson

Nat Coomer
(910) 486-7351
Lafayette Hall, Room 137-A
coomern@faytechcc.edu
www.faytechcc.edu



2201 Hull Road
P.O. Box 35236
Fayetteville, NC 28303
(910) 678-8400

COMPUTER-INTEGRATED MACHINING

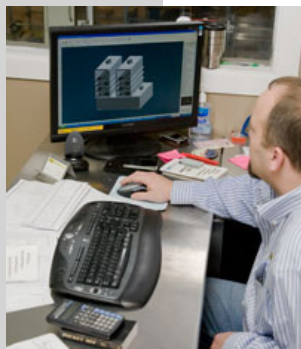


www.faytechcc.edu

*Fayetteville Technical
Community College*

910-678-8400
P.O. Box 35236 • 2201 Hull Road
Fayetteville, NC 28303

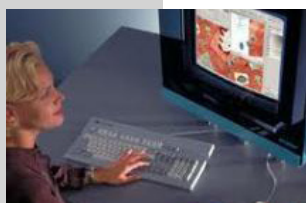
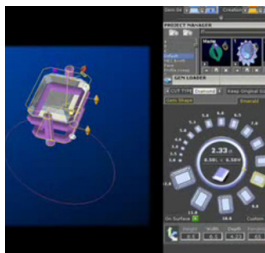
PROGRAM FACT SHEET COMPUTER-INTEGRATED MACHINING (A50210)



The Computer-Integrated Machining curriculum prepares students with the analytical, creative and innovative skills necessary to take a production idea from an initial concept through design, development and

production, resulting in a finished product.

Coursework may include manual machining, computer applications, engineering design, computer-aided drafting (CAD), computer-aided machining (CAM), blueprint interpretation, advanced computerized numeric control (CNC) equipment, basic and advanced machining operations, precision measurement and high-speed multi-axis machining.



Graduates should qualify for employment as machining technicians in high-tech manufacturing, rapid-prototyping

and rapid-manufacturing industries, specialty machine shops, fabrication industries, and high-tech or emerging industries such as aerospace, aviation, medical, and renewable energy, as to sit for machining certification examinations.

FAYETTEVILLE TECHNICAL COMMUNITY COLLEGE COMPUTER-INTEGRATED MACHINING (A50210)

Effective: Fall 2025

Revised: 02/05/25

Length: 5 Semesters

Prerequisite: High School Diploma, Placement Test Equivalent

Award: Associate in Applied Science

FALL SEMESTER 1

Prefix	No.	Title	Class	Lab	Clinical	Credit
ACA 120		Career Assesment	1	0	0	1
or						
ACA 122		College Transfer Success	0	2	0	1
ISC 112		Industrial Safety	2	0	0	2
MAC 111		Machining Technology	2	12	0	6
MAC 114		Intro to Metrology	2	0	0	2
MAC 131		Blueprint Reading/Mach I	1	2	0	2
MAC 151		Machining Calculations	1	2	0	2
		Humanities/Fine Arts Elective	3	0	0	3
TOTALS			11	16	0	18

SPRING SEMESTER 1

Prefix	No.	Title	Class	Lab	Clinical	Credit
ENG 110		Freshman Composition	3	0	0	3
or						
ENG 111		Writing and Inquiry	3	0	0	3
DFT 119		Basic CAD	1	2	0	2
MAC 112		Machining Technology II	2	12	0	6
MAC 121		Intro to CNC	2	0	0	2
MAC 226		CNC EDM Machining	1	3	0	2
TOTALS			9	17	0	15

SUMMER SEMESTER 1

Prefix	No.	Title	Class	Lab	Clinical	Credit
MAC 181		CNC Mill: Prog Set & Oper	2	6	0	4
MAC 232		CAM: CNC Milling	1	4	0	3
TOTALS			3	10	0	7

Work-Based Learning Option: NA

Note: Students **may not** take an introductory foreign language to fulfill the Humanities/Fine Arts requirement.

Note: ENG-110 is not transferable.

FALL SEMESTER 2

Prefix	No.	Title	Class	Lab	Clinical	Credit
MAC 113		Machining Technology III	2	12	0	6
MAC 122		CNC Turning	1	3	0	2
MAC 231		CAM CNC Turning	1	4	0	3
MAT 110		Math Measurement & Lit	2	2	0	3
or						
PHY 121		Applied Physics I	3	2	0	4
PSY 118		Interpersonal Psychology	3	0	0	3
TOTALS			9	21	0	17

SPRING SEMESTER 2

Prefix	No.	Title	Class	Lab	Clinical	Credit
COM 120		Intro Interspersional Com	3	0	0	3
or						
COM 231		Public Speaking	3	0	0	3
MAC 224		Advanced CNC Milling	1	3	0	2
MAC 233		Appl in CNC Machining	2	12	0	6
MAC 248		Production Procedures	1	2	0	2
TOTALS			7	17	0	13

TOTAL REQUIRED CREDITS.... 70



Refer to the FTCC website for the most current information. Go to www.faytechcc.edu and click on College Catalog.