

Awards

Associate Degree: Medical Laboratory Technology (A45420)
Length of Program: 5 Semesters
Prerequisite: High School Diploma/GED, 1 Unit of Biology, ENG-002 Tier 2, MAT-003 Tier 1, or Placement Test Credit Equivalent

Diploma: Medical Laboratory Assisting Diploma (D45420)
Length of Program: 3 Semesters
Prerequisite: High School Diploma/GED, 1 Unit of Biology, Algebra & Chemistry or Placement Test Credit Equivalent

Certificate: Clinical Diagnostic Testing Certificate (C45420C1)
Length of Program: 2 Semesters
Prerequisite: High School Diploma/GED, 1 Unit of Biology, Algebra & Chemistry or Placement Test Credit Equivalent

Certificate: Clinical Diagnostic Testing Certificate (C45420H1)
Length of Program: 2 Semesters
Prerequisite: 1 Unit of Biology, Algebra & Chemistry or Placement Test Credit Equivalent

Program Information Contact

Curriculum Chairperson

Henock Haile
(910) 486-7425
Health Technologies Center, Room 169-K
haileh@faytechcc.edu
www.faytechcc.edu

License or Certification Information: MLT (ASCP) from the American Society for Clinical Pathology. Students with a felony conviction have limited certification and employment opportunities.

Programmatic Accreditation: Accredited by: National Accreditation Agency for Clinical Laboratory Sciences (NAACLS), 5600 N. River Road, Suite 720, Rosemont, IL 60018, Phone (773) 714-8880, Email info@naacls.org, Website www.naacls.org (FTCC initial program accreditation process underway and will be completed by graduation of first cohort).

Rev. 02/07/24

Other Important Information

Application Deadlines: The program is designed for a student to enter during the fall semester. A student may enter at other times with approval of the Department Chairperson. Students should apply by January 30th. Specific health program admission requirements must be met before a student is eligible for admission.

Scholarship/Title IV Financial Aid/VA Services: Scholarships/Title IV Financial Aid/Veteran's assistance may be available for associate degrees. Certificates and diplomas that fall under this program/area of study **may or may not be eligible** for Scholarship/Title IV Financial Aid/VA Services. Please contact the Financial Aid Office, Student Center, Room 2; Telephone (910) 678-8242. Veterans Services, General Classroom Building, Room 202, (910) 678-8580.

Allied Health Technologies NC SARA Statement: The Medical Laboratory Technology Program is designed to meet the educational requirements for the American Society for Clinical Pathology national certification as a Medical Laboratory Technician (MLT). For more information, please visit our program webpage at <https://www.faytechcc.edu/academics/health-programs/medical-laboratory-technology/>.

FTCC

2201 Hull Road
P.O. Box 35236
Fayetteville, NC 28303
(910) 678-8400



MEDICAL LABORATORY TECHNOLOGY



www.faytechcc.edu

*Fayetteville Technical
Community College*

910-678-8400
P.O. Box 35236 • 2201 Hull Road
Fayetteville, NC 28303

An Equal Opportunity Employer

PROGRAM FACT SHEET MEDICAL LABORATORY TECHNOLOGY (A45420)



The Medical Laboratory Technology curriculum prepares individuals to perform clinical laboratory procedures in chemistry, hematology, microbiology, and immunohematology that

may be used in the maintenance of health and diagnosis/treatment of disease.

Course work emphasizes mathematical and scientific concepts related to specimen collection, laboratory testing and procedures, quality assurance and reporting/recording and interpreting findings involving tissues, blood, and body fluids.



Graduates may be eligible to take the examination given by the Board of Certification of the American Society for Clinical Pathology. Employment opportunities include laboratories in hospitals, medical offices, industry, and research facilities.



FAYETTEVILLE TECHNICAL COMMUNITY COLLEGE MEDICAL LABORATORY TECHNOLOGY (A45420)

Effective: Fall 2024

Revised: 02/07/24

Length: 5 Semesters

Prerequisite: High School Diploma/GED, 1 Unit of Biology, ENG-002 Tier 2, MAT-003 Tier 1, or Placement Test Credit Equivalent

Award: Associate in Applied Science

SEMESTER 1

Prefix	No.	Title	Class	Lab	Clinical	Credit
ACA	120	Career Assessment	1	0	0	1
ACA	122	College Transfer Success	0	2	0	1
BIO	163	Basic Anat & Physiology	4	2	0	5
MAT	143	Quantitative Literacy	2	2	0	3
MLT	110	Intro to MLT	2	3	0	3
MLT	111	Urinalysis & Body Fluids	1	3	0	2
MLT	118	Medical Lab Chemistry	3	0	0	3
TOTALS			12	10	0	17

SEMESTER 2

Prefix	No.	Title	Class	Lab	Clinical	Credit
MLT	120	Hematology/Hemostasis I	3	3	0	4
MLT	126	Immunology and Serology	1	2	0	2
MLT	127	Transfusion Medicine	2	3	0	3
MLT	130	Clinical Chemistry I	3	3	0	4
MLT	140	Intro to Microbiology	2	3	0	3
TOTALS			11	14	0	16

SEMESTER 3

Prefix	No.	Title	Class	Lab	Clinical	Credit
ENG	111	Writing and Inquiry	3	0	0	3
MLT	230	Clinical Chemistry II	2	3	0	3
MLT	240	Special Clin Microbiology	2	3	0	3
MLT	252	MLT Practicum I	0	0	6	2
TOTALS			7	6	6	11

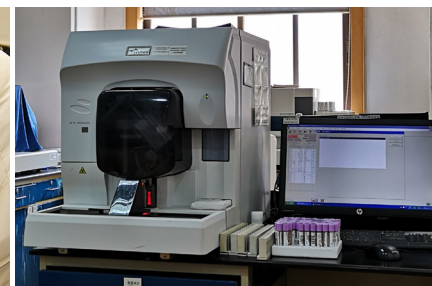
SEMESTER 4

Prefix	No.	Title	Class	Lab	Clinical	Credit
CIS	113	Computer Basics	0	2	0	1
MLT	220	Hematology/Hemostasis II	2	3	0	3
MLT	267	MLT Practicum II	0	0	24	8
PSY	150	General Psychology	3	0	0	3
TOTALS			5	5	24	15

SEMESTER 5

Prefix	No.	Title	Class	Lab	Clinical	Credit
ENG	112	Writing/Research in the Disc	3	0	0	3
MLT	215	Professional Issues	1	0	0	1
MLT	277	MLT Practicum III	0	0	24	8
		Humanities/Fine Arts Elect	3	0	0	3
TOTALS			7	0	24	15

TOTAL REQUIRED CREDITS.... 74



Work-Based Learning Option: NA

Students with a felony conviction may have limited licensure and employment opportunities.

*Note: Students may not take an introductory foreign language to fulfill the Humanities/Fine Arts requirement.

Refer to the FTCC website for the most current information. Go to www.faytechcc.edu and click on College Catalog.