

Awards

Associate Degree: Electrical Systems Technology (A35130)
Length of Program: 5 Semesters
Prerequisite: High School Diploma & 1 Unit of Algebra, Placement Test Equivalent

Diploma: Electrical Systems Technology (D35130)
Length of Program: 3 Semesters
Prerequisite: High School Diploma, Placement Test Equivalent

Certificate: Introduction to Photovoltaic Systems (C35130C2)
Length of Program: 2 Semesters
Prerequisite: Placement Test Equivalent

Certificate: Basic Residential Wiring (C35130C3)
Length of Program: 2 Semesters
Prerequisite: Placement Test Equivalent

Certificate: Introduction to Photovoltaic Systems (C35130H2)
Length of Program: 2 Semesters
Prerequisite: Placement Test Equivalent

Program Information Contact

Curriculum Chairperson

Ron Hamilton
 (910) 678-8326
 Cumberland Hall, Room 334-H
hamiltor@faytechcc.edu
www.faytechcc.edu

Other Important Information

Application Deadlines: The program is designed for a student to enter during the fall or spring semester. A student may enter at other times with approval of the Department Chairperson.

Scholarship/Title IV Financial Aid/VA Services: Scholarships/Title IV Financial Aid/Veteran's assistance may be available for associate degrees. Certificates and diplomas that fall under this program/area of study may or may not be eligible for Scholarship/Title IV Financial Aid/VA Services. Please contact the Financial Aid Office, Student Center, Room 2; Telephone (910) 678-8242. Veterans Services, General Classroom Building, Room 202, (910) 678-8580.

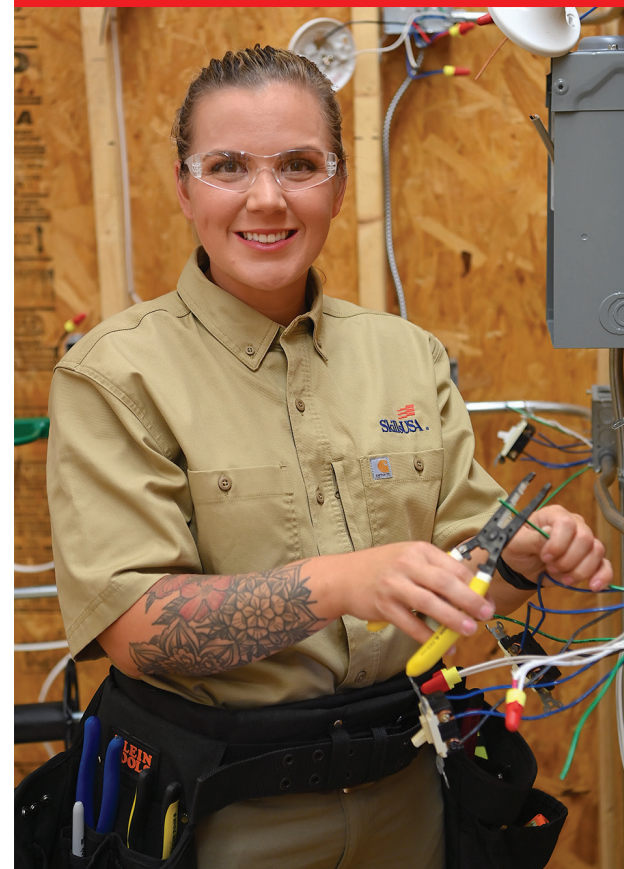


2201 Hull Road
 P.O. Box 35236
 Fayetteville, NC 28303
 (910) 678-8400

SOUTHERN ASSOCIATION OF COLLEGES & SCHOOLS COMMISSION ON COLLEGES

Fayetteville Technical Community College is accredited by the Southern Association of Colleges and Schools Commission on Colleges (SACSCOC) to award associate degrees, diplomas, and certificates. Degree-granting institutions also may offer credentials such as certificates and diplomas at approved degree levels. Questions about the accreditation of Fayetteville Technical Community College may be directed in writing to the Southern Association of Colleges and Schools Commission on Colleges at 1866 Southern Lane, Decatur, GA 30033-4097, by calling (404) 679-4500, or by using information available on SACSCOC's website (www.sacscoc.org).

ELECTRICAL SYSTEMS TECHNOLOGY



www.faytechcc.edu

*Fayetteville Technical
Community College*

910-678-8400
 P.O. Box 35236 • 2201 Hull Road
 Fayetteville, NC 28303

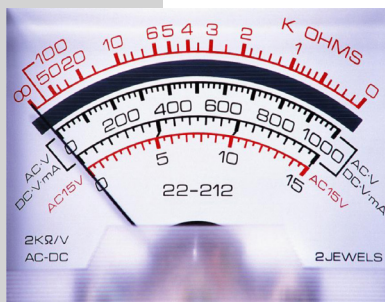
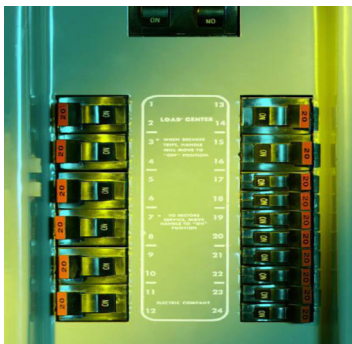
An Equal Opportunity Employer

PROGRAM FACT SHEET ELECTRICAL SYSTEMS TECHNOLOGY (A35130)



This curriculum is designed to provide training for persons interested in the installation and maintenance of electrical systems found in residential, commercial, and industrial facilities.

Coursework, most of which is hands-on, will include such topics as AC/DC theory, basic wiring practices, programmable logic controllers, industrial motor controls, applications of the National Electric Code, and other subjects as local needs require.



Graduates should qualify for a variety of jobs in the electrical field as an on-the-job trainee or apprentice assisting in

the layout, installation, and maintenance of electrical/electronic systems.

FAYETTEVILLE TECHNICAL COMMUNITY COLLEGE ELECTRICAL SYSTEMS TECHNOLOGY (A35130)

Effective: Fall 2023

Revised: 05/19/23

Length: 5 Semesters

Prerequisite: High School Diploma & 1 Unit of Algebra, Placement Test Equivalent

Award: Associate in Applied Science

FALL SEMESTER 1

| Prefix | No. | Title | Class | Lab | Clinical | Credit |
|---------------|-----|---------------------------|-----------|-----------|----------|-----------|
| ACA | 120 | Career Assessment | 1 | 0 | 0 | 1 |
| or | | | | | | |
| ACA | 122 | College Transfer Success | 0 | 2 | 0 | 1 |
| CIS | 110 | Introduction to Computers | 2 | 2 | 0 | 3 |
| ELC | 112 | DC/AC Electricity | 3 | 6 | 0 | 5 |
| ELC | 128 | Intro to PLC | 2 | 3 | 0 | 3 |
| *ENG | 110 | Freshman Composition | 3 | 0 | 0 | 3 |
| or | | | | | | |
| ENG | 111 | Writing and Inquiry | 3 | 0 | 0 | 3 |
| TOTALS | | | 10 | 11 | 0 | 15 |

SPRING SEMESTER 1

| Prefix | No. | Title | Class | Lab | Clinical | Credit |
|---------------|-----|--------------------------|----------|-----------|----------|-----------|
| ELC | 113 | Residential Wiring | 2 | 6 | 0 | 4 |
| ELC | 117 | Motors and Controls | 2 | 6 | 0 | 4 |
| ELC | 118 | National Electrical Code | 1 | 2 | 0 | 2 |
| ELC | 220 | Photovoltaic Sys Tech | 2 | 3 | 0 | 3 |
| MAT | 110 | Math Measure & Literacy | 2 | 2 | 0 | 3 |
| TOTALS | | | 9 | 19 | 0 | 16 |

SUMMER SEMESTER 1

| Prefix | No. | Title | Class | Lab | Clinical | Credit |
|---------------|-----|-------------------------|----------|----------|----------|----------|
| ELC | 121 | Electrical Estimating | 1 | 2 | 0 | 2 |
| ELC | 122 | Adv. Residential Wiring | 2 | 4 | 0 | 4 |
| TOTALS | | | 3 | 6 | 0 | 6 |

FALL SEMESTER 2

| Prefix | No. | Title | Class | Lab | Clinical | Credit |
|---------------|-----|-------------------------|-----------|----------|----------|-----------|
| BPR | 130 | Blueprint Reading/Const | 3 | 0 | 0 | 3 |
| COM | 120 | Intro Interpersonal Com | 3 | 0 | 0 | 3 |
| or | | | | | | |
| COM | 231 | Public Speaking | 3 | 0 | 0 | 3 |
| ELC | 114 | Commercial Wiring | 2 | 6 | 0 | 4 |
| ELC | 119 | NEC Calculations | 1 | 2 | 0 | 2 |
| ISC | 115 | Constructoin Safety | 2 | 0 | 0 | 2 |
| TOTALS | | | 11 | 8 | 0 | 14 |

SPRING SEMESTER 2

| Prefix | No. | Title | Class | Lab | Clinical | Credit |
|---------------|-----|-------------------------------|-----------|----------|----------|-----------|
| BUS | 110 | Introduction to Business | 3 | 0 | 0 | 3 |
| ELC | 229 | Applications Project | 1 | 3 | 0 | 2 |
| | | Humanities/Fine Arts Elective | 3 | 0 | 0 | 3 |
| | | Social/Behav Science Elective | 3 | 0 | 0 | 3 |
| | | Major Elective | 3 | 0 | 0 | 3 |
| TOTALS | | | 13 | 3 | 0 | 14 |

TOTAL REQUIRED CREDITS...65

Work-Based Learning Option: Qualified students may elect to take up to three (3) credit hours of Work-Based Learning in lieu of a Major elective provided they acquire approval from the Work-Based Learning Coordinator and the Department Chairperson.

Note: Students **may not** take an introductory foreign language to fulfill the Humanities/Fine Arts requirement.

***Note:** ENG-110 is not transferable.