

Awards

Associate Degree:	Distribution Management (A25620D)
Length of Program:	5 Semesters
Prerequisite:	High School Diploma, Placement Test Equivalent
Associate Degree:	Global Logistics Technology (A25620G)
Length of Program:	5 Semesters
Prerequisite:	High School Diploma, Placement Test Equivalent
Associate Degree:	Trucking Operations Management (A25620T)
Length of Program:	5 Semesters
Prerequisite:	High School Diploma, Placement Test Equivalent
Diploma:	Not Applicable
Length of Program:	
Prerequisite:	
Certificate:	Logistics and Distribution Management Certificate (C25620C1)
Length of Program:	2 Semesters
Prerequisite:	High School Diploma, Placement Test Equivalent
Certificate:	Trucking Logistics Foundations Management Certificate (C25620C2)
Length of Program:	2 Semesters
Prerequisite:	High School Diploma, Placement Test Equivalent
Certificate:	Supply Chain Analytics Certificate (C25620C3)
Length of Program:	2 Semesters
Prerequisite:	High School Diploma, Placement Test Equivalent
Certificate:	Logistics and Distribution Management Foundations Certificate (C25620H1)
Length of Program:	2 Semesters
Prerequisite:	Placement Test Equivalent

Program Information Contact

Department Chair

Sean Smith
(910) 678-8521
Cumberland Hall, Room 377-T
smithse@faytechcc.edu
www.faytechcc.edu

Rev. 02/18/25

Other Important Information

Application Deadlines: The program only admits students in the fall semester. A student may enter at other times with approval of the Department Chairperson.

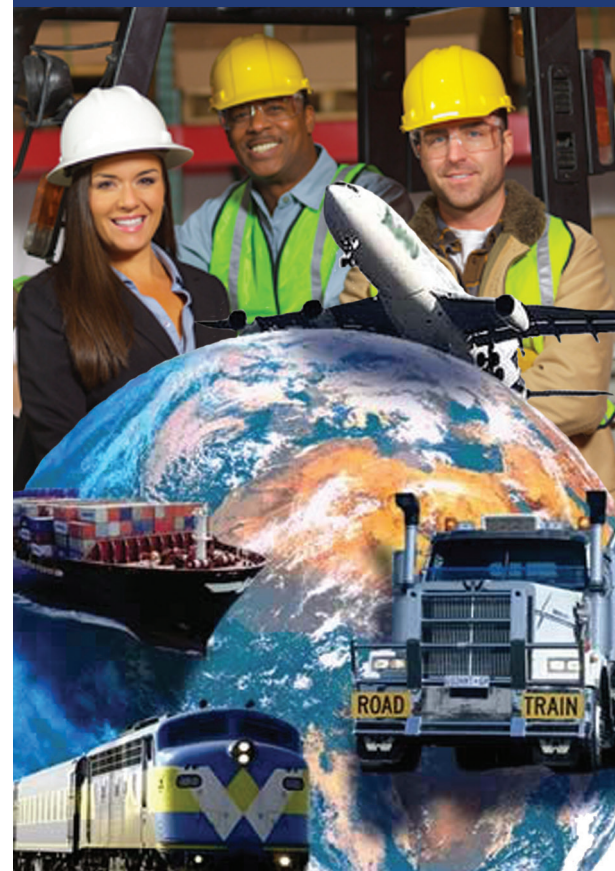
Scholarship/Title IV Financial Aid/VA Services: Scholarships/Title IV Financial Aid/Veteran's assistance may be available for associate degrees. Certificates and diplomas that fall under this program/area of study may or may not be eligible for Scholarship/Title IV Financial Aid/VA Services. Please contact the Financial Aid Office, Student Center, Room 2; Telephone (910) 678-8242. Veterans Services, General Classroom Building, Room 202, (910) 678-8580.



FTCC

2201 Hull Road
P.O. Box 35236
Fayetteville, NC 28303
(910) 678-8400

SUPPLY CHAIN MANAGEMENT/ GLOBAL LOGISTICS TECHNOLOGY



www.faytechcc.edu

Fayetteville Technical Community College

910-678-8400
P.O. Box 35236 • 2201 Hull Road
Fayetteville, NC 28303

An Equal Opportunity Employer

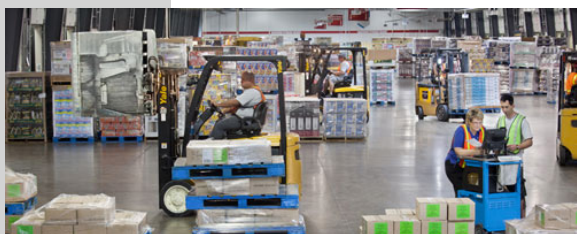
PROGRAM FACT SHEET SUPPLY CHAIN MANAGEMENT/ GLOBAL LOGISTICS TECHNOLOGY (A25620G)



The Supply Chain Management curriculum prepares individuals for a multitude of career opportunities in distribution, transportation, warehousing, trucking operations, supply chain, and manufacturing organizations.

Course work includes the international and domestic movement of goods from the raw materials source(s) through production and ultimately to the consumer. Courses in economics and finance, transportation, warehousing, inventory control, material handling, purchasing, computerization, supply chain operations, federal transportation and safety regulations are emphasized.

Graduates should qualify for positions in a wide range of supply chain and logistics positions in government agencies, manufacturing, and service organizations. Employment opportunities include entry-level distribution, planning, material management, warehousing, inventory, transportation, trucking operations, international freight, and logistics.



FAYETTEVILLE TECHNICAL COMMUNITY COLLEGE SUPPLY CHAIN MANAGEMENT/GLOBAL LOGISTICS TECHNOLOGY (A25620G)

Effective: Fall 2022

Revised: 01/11/22

Length: 5 Semesters

Prerequisite: High School Diploma, Placement Test Equivalent

Award: Associate in Applied Science

FALL SEMESTER 1

Prefix	No.	Title	Class	Lab	Clinical	Credit
ACA	120	Career Assessment	1	0	0	1
or						
ACA	122	College Transfer Success	0	2	0	1
ENG	111	Writing and Inquiry	3	0	0	3
LOG	110	Introduction to Logistics	3	0	0	3
LOG	125	Transportation Logistics	3	0	0	3
		Computer App Elective	1	2	0	2
TOTALS			10	2	0	12

SPRING SEMESTER 1

Prefix	No.	Title	Class	Lab	Clinical	Credit
CTS	130	Spreadsheet	2	2	0	3
LOG	215	Supply Chain Management	3	0	0	3
MAT	143	Quantitative Literacy	2	2	0	3
or						
MAT	152	Statistical Methods I	3	2	0	4
OMT	156	Problem-Solving Skills	3	0	0	3
		Humanities/Fine Arts Elect	3	0	0	3
TOTALS			13	4	0	15

SUMMER SEMESTER 1

Prefix	No.	Title	Class	Lab	Clinical	Credit
BUS	110	Introduction to Business	3	0	0	3
		Communications Elective	3	0	0	3
TOTALS			6	0	0	6

FALL SEMESTER 2

Prefix	No.	Title	Class	Lab	Clinical	Credit
ACC	120	Prin of Financial Accounting	3	2	0	4
ECO	251	Principles of Microeconomics	3	0	0	3
INT	110	International Business	3	0	0	3
LOG	240	Purchasing Logistics	3	0	0	3
MKT	223	Customer Service	3	0	0	3
TOTALS			15	2	0	16

SPRING SEMESTER 2

Prefix	No.	Title	Class	Lab	Clinical	Credit
BUS	115	Business Law I	3	0	0	3
LOG	235	Import/Export Management	3	0	0	3
LOG	250	Advanced Global Logistics	3	2	0	4
		Soc/Behav Science Elective	3	0	0	3
		Major Elective	4	0	0	4
TOTALS			16	2	0	17

TOTAL REQUIRED CREDITS....66



Work-Based Learning Option: Qualified students may elect to take up to three (3) credit hours of Work-Based Learning in lieu of a Major elective provided they acquire approval from the Work-Based Learning Coordinator and the Department Chairperson.

Note: Students **may not** take an introductory foreign language to fulfill the Humanities/Fine Arts requirement.

Refer to the FTCC website
for the most current information.
Go to www.faytechcc.edu
and click on College Catalog.