

## Awards

**Associate Degree:** Computer-Integrated Machining (A50210)  
**Length of Program:** 5 Semesters  
**Prerequisite:** High School Diploma, Placement Test Equivalent

**Diploma:** Manual Machining (D50210)  
**Length of Program:** 3 Semesters  
**Prerequisite:** High School Diploma, Placement Test Equivalent

**Certificate:** Basic Computer-Integrated Machining Certificate (C50210C1)  
**Length of Program:** 4 Semesters  
**Prerequisite:** High School Diploma, Placement Test Equivalent

**Certificate:** Basic Computer-Integrated Machining Certificate (C50210H1)  
**Length of Program:** 4 Semesters  
**Prerequisite:** Placement Test Equivalent

## Other Important Information

**Application Deadlines:** The program is designed for a student to enter during the fall semester. A student may enter at other times with approval of the Department Chairperson.

**Scholarship/Title IV Financial Aid/VA Services:** Scholarships/Title IV Financial Aid/Veteran's assistance may be available for associate degrees. Certificates and diplomas that fall under this program/area of study **may or may not be eligible** for Scholarship/Title IV Financial Aid/VA Services. Please contact the Financial Aid Office, Student Center, Room 2; Telephone (910) 678-8242. Veterans Services, General Classroom Building, Room 202, (910) 678-8580.



## Program Information Contact

### Curriculum Chairperson

Nat Coomer  
(910) 486-7351  
Lafayette Hall, Room 137-A  
coomern@faytechcc.edu  
www.faytechcc.edu



2201 Hull Road  
P.O. Box 35236  
Fayetteville, NC 28303  
(910) 678-8400

# COMPUTER-INTEGRATED MACHINING

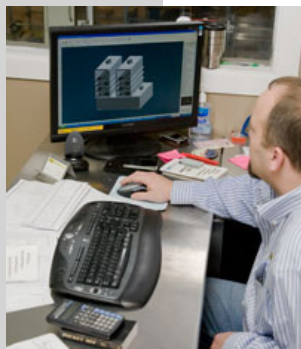


[www.faytechcc.edu](http://www.faytechcc.edu)

*Fayetteville Technical  
Community College*

910-678-8400  
P.O. Box 35236 • 2201 Hull Road  
Fayetteville, NC 28303

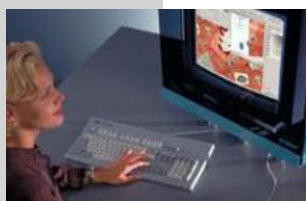
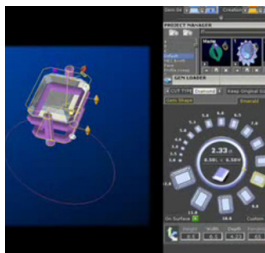
## PROGRAM FACT SHEET COMPUTER-INTEGRATED MACHINING (A50210)



The Computer-Integrated Machining curriculum prepares students with the analytical, creative and innovative skills necessary to take a production idea from an initial concept through design, development and

production, resulting in a finished product.

Coursework may include manual machining, computer applications, engineering design, computer-aided drafting (CAD), computer-aided machining (CAM), blueprint interpretation, advanced computerized numeric control (CNC) equipment, basic and advanced machining operations, precision measurement and high-speed multi-axis machining.



Graduates should qualify for employment as machining technicians in high-tech manufacturing, rapid-prototyping

and rapid-manufacturing industries, specialty machine shops, fabrication industries, and high-tech or emerging industries such as aerospace, aviation, medical, and renewable energy, as to sit for machining certification examinations.

## FAYETTEVILLE TECHNICAL COMMUNITY COLLEGE COMPUTER-INTEGRATED MACHINING (A50210)

Effective: Fall 2022

Revised: 01/07/22

Length: 5 Semesters

Prerequisite: High School Diploma, Placement Test Equivalent

Award: Associate in Applied Science

### FALL SEMESTER 1

Prefix	No.	Title	Class	Lab	Clinical	Credit
ACA 120		Career Assesment	1	0	0	1
or						
ACA 122		College Transfer Success	0	2	0	1
ISC 110		Workplace Safety	1	0	0	1
MAC 111		Machining Technology	2	12	0	6
MAC 114		Intro to Metrology	2	0	0	2
MAC 131		Blueprint Reading/Mach I	1	2	0	2
MAC 151		Machining Calculations	1	2	0	2
		Humanities/Fine Arts Elective	3	0	0	3
<b>TOTALS</b>			<b>10</b>	<b>16</b>	<b>0</b>	<b>17</b>

### SPRING SEMESTER 1

Prefix	No.	Title	Class	Lab	Clinical	Credit
ENG 110		Freshman Composition	3	0	0	3
or						
ENG 111		Writing and Inquiry	3	0	0	3
DFT 119		Basic CAD	1	2	0	2
MAC 112		Machining Technology II	2	12	0	6
MAC 121		Intro to CNC	2	0	0	2
MAC 226		CNC EDM Machining	1	3	0	2
<b>TOTALS</b>			<b>9</b>	<b>17</b>	<b>0</b>	<b>15</b>

### SUMMER SEMESTER 1

Prefix	No.	Title	Class	Lab	Clinical	Credit
MAC 181		CNC Mill: Prog Set & Oper	2	6	0	4
MAC 232		CAM: CNC Milling	1	4	0	3
<b>TOTALS</b>			<b>3</b>	<b>10</b>	<b>0</b>	<b>7</b>

**Work-Based Learning Option:** NA

**Note:** Students **may not** take an introductory foreign language to fulfill the Humanities/Fine Arts requirement.

**Note:** ENG-110 is not transferable.

### FALL SEMESTER 2

Prefix	No.	Title	Class	Lab	Clinical	Credit
MAC 113		Machining Technology III	2	12	0	6
MAC 122		CNC Turning	1	3	0	2
MAC 231		CAM CNC Turning	1	4	0	3
MAT 110		Math Measurement & Lit	2	2	0	3
or						
PHY 121		Applied Physics I	3	2	0	4
PSY 118		Interpersonal Psychology	3	0	0	3
<b>TOTALS</b>			<b>9</b>	<b>21</b>	<b>0</b>	<b>17</b>

### SPRING SEMESTER 2

Prefix	No.	Title	Class	Lab	Clinical	Credit
COM 120		Intro Interspersional Com	3	0	0	3
or						
COM 231		Public Speaking	3	0	0	3
MAC 224		Advanced CNC Milling	1	3	0	2
MAC 233		Appl in CNC Machining	2	12	0	6
MAC 248		Production Procedures	1	2	0	2
<b>TOTALS</b>			<b>7</b>	<b>17</b>	<b>0</b>	<b>13</b>

**TOTAL REQUIRED CREDITS.... 69**



Refer to the FTCC website for the most current information. Go to [www.faytechcc.edu](http://www.faytechcc.edu) and click on College Catalog.