

## Awards

**Associate Degree:** Computer-Integrated Machining (A50210)  
**Length of Program:** 5 Semesters  
**Prerequisite:** High School Diploma, Placement Test Equivalent

**Diploma:** Manual Machining (D50210)  
**Length of Program:** 3 Semesters  
**Prerequisite:** High School Diploma, Placement Test Equivalent

**Certificate:** Basic Computer-Integrated Machining Certificate (C50210C1)  
**Length of Program:** 4 Semesters  
**Prerequisite:** High School Diploma, Placement Test Equivalent

**Certificate:** Basic Computer-Integrated Machining Certificate (C50210H1)  
**Length of Program:** 4 Semesters  
**Prerequisite:** Placement Test Equivalent

## Other Important Information

**Application Deadlines:** The program is designed for a student to enter during the fall semester. A student may enter at other times with approval of the Department Chairperson.

**Scholarship/Title IV Financial Aid/VA Services:** Scholarships/Title IV Financial Aid/Veteran's assistance may be available for associate degrees. Certificates and diplomas that fall under this program/area of study **may or may not be eligible** for Scholarship/Title IV Financial Aid/VA Services. Please contact the Financial Aid Office, Student Center, Room 2; Telephone (910) 678-8242. Veterans Services, General Classroom Building, Room 202, (910) 678-8580.



## Program Information Contact

### Curriculum Chairperson

Kevin Henry  
(910) 678-0025  
Lafayette Hall, Room 137-A  
henryk@faytechcc.edu  
www.faytechcc.edu

# FITCC

2201 Hull Road  
P.O. Box 35236  
Fayetteville, NC 28303  
(910) 678-8400

#### SOUTHERN ASSOCIATION OF COLLEGES & SCHOOLS COMMISSION ON COLLEGES

Fayetteville Technical Community College is accredited by the Southern Association of Colleges and Schools Commission on Colleges (SACSCOC) to award associate degrees, diplomas, and certificates. Degree-granting institutions also may offer credentials such as certificates and diplomas at approved degree levels. Questions about the accreditation of Fayetteville Technical Community College may be directed in writing to the Southern Association of Colleges and Schools Commission on Colleges at 1866 Southern Lane, Decatur, GA 30033-4097, by calling (404) 679-4500, or by using information available on SACSCOC's website ([www.sacscoc.org](http://www.sacscoc.org)).

# COMPUTER-INTEGRATED MACHINING



[www.faytechcc.edu](http://www.faytechcc.edu)

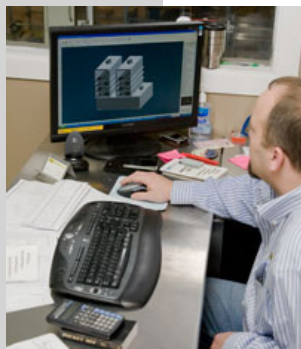
*Fayetteville Technical  
Community College*

910-678-8400

P.O. Box 35236 • 2201 Hull Road  
Fayetteville, NC 28303

An Equal Opportunity Employer

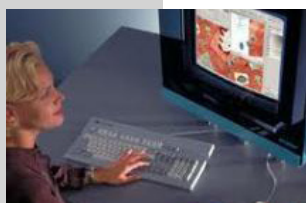
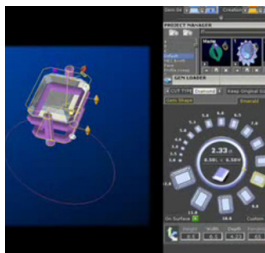
## PROGRAM FACT SHEET COMPUTER-INTEGRATED MACHINING (A50210)



The Computer-Integrated Machining curriculum prepares students with the analytical, creative and innovative skills necessary to take a production idea from an initial concept through design, development and

production, resulting in a finished product.

Coursework may include manual machining, computer applications, engineering design, computer-aided drafting (CAD), computer-aided machining (CAM), blueprint interpretation, advanced computerized numeric control (CNC) equipment, basic and advanced machining operations, precision measurement and high-speed multi-axis machining.



Graduates should qualify for employment as machining technicians in high-tech manufacturing, rapid-prototyping

and rapid-manufacturing industries, specialty machine shops, fabrication industries, and high-tech or emerging industries such as aerospace, aviation, medical, and renewable energy, as to sit for machining certification examinations.

## FAYETTEVILLE TECHNICAL COMMUNITY COLLEGE COMPUTER-INTEGRATED MACHINING (A50210)

Effective: Fall 2022

Revised: 01/07/22

Length: 5 Semesters

Prerequisite: High School Diploma, Placement Test Equivalent

Award: Associate in Applied Science

### FALL SEMESTER 1

Prefix	No.	Title	Class	Lab	Clinical	Credit
ACA 120		Career Assesment	1	0	0	1
or						
ACA 122		College Transfer Success	0	2	0	1
ISC 110		Workplace Safety	1	0	0	1
MAC 111		Machining Technology	2	12	0	6
MAC 114		Intro to Metrology	2	0	0	2
MAC 131		Blueprint Reading/Mach I	1	2	0	2
MAC 151		Machining Calculations	1	2	0	2
		Humanities/Fine Arts Elective	3	0	0	3
<b>TOTALS</b>			<b>10</b>	<b>16</b>	<b>0</b>	<b>17</b>

### SPRING SEMESTER 1

Prefix	No.	Title	Class	Lab	Clinical	Credit
ENG 110		Freshman Composition	3	0	0	3
or						
ENG 111		Writing and Inquiry	3	0	0	3
DFT 119		Basic CAD	1	2	0	2
MAC 112		Machining Technology II	2	12	0	6
MAC 121		Intro to CNC	2	0	0	2
MAC 226		CNC EDM Machining	1	3	0	2
<b>TOTALS</b>			<b>9</b>	<b>17</b>	<b>0</b>	<b>15</b>

### SUMMER SEMESTER 1

Prefix	No.	Title	Class	Lab	Clinical	Credit
MAC 181		CNC Mill: Prog Set & Oper	2	6	0	4
MAC 232		CAM: CNC Milling	1	4	0	3
<b>TOTALS</b>			<b>3</b>	<b>10</b>	<b>0</b>	<b>7</b>

**Work-Based Learning Option:** NA

**Note:** Students **may not** take an introductory foreign language to fulfill the Humanities/Fine Arts requirement.

**Note:** ENG-110 is not transferable.

### FALL SEMESTER 2

Prefix	No.	Title	Class	Lab	Clinical	Credit
MAC 113		Machining Technology III	2	12	0	6
MAC 122		CNC Turning	1	3	0	2
MAC 231		CAM CNC Turning	1	4	0	3
MAT 110		Math Measurement & Lit	2	2	0	3
or						
PHY 121		Applied Physics I	3	2	0	4
PSY 118		Interpersonal Psychology	3	0	0	3
<b>TOTALS</b>			<b>9</b>	<b>21</b>	<b>0</b>	<b>17</b>

### SPRING SEMESTER 2

Prefix	No.	Title	Class	Lab	Clinical	Credit
COM 120		Intro Interspersional Com	3	0	0	3
or						
COM 231		Public Speaking	3	0	0	3
MAC 224		Advanced CNC Milling	1	3	0	2
MAC 233		Appl in CNC Machining	2	12	0	6
MAC 248		Production Procedures	1	2	0	2
<b>TOTALS</b>			<b>7</b>	<b>17</b>	<b>0</b>	<b>13</b>

**TOTAL REQUIRED CREDITS.... 69**



Refer to the FTCC website for the most current information. Go to [www.faytechcc.edu](http://www.faytechcc.edu) and click on College Catalog.