

Awards

Associate Degree:	Global Logistics and Distribution Management Technology/Global Logistics Track (A25610G)
Length of Program:	5 Semesters
Prerequisite:	High School Diploma, Placement Test Equivalent
Diploma:	Not Applicable
Length of Program:	2 Semesters
Prerequisite:	High School Diploma, Placement Test Equivalent
Certificate:	Logistics and Distribution Principles Certificate (C25610C1)
Length of Program:	2 Semesters
Prerequisite:	High School Diploma, Placement Test Equivalent
Certificate:	Logistics and Distribution Management Foundations Certificate (C25610H1)
Length of Program:	2 Semesters
Prerequisite:	Placement Test Equivalent

Program Information Contact

Curriculum Chairperson

Kelly Gold
(910) 678-8292
Cumberland Hall, Room 377-K
goldk@faytechcc.edu
www.faytechcc.edu

Other Important Information

Application Deadlines: The program only admits students in the fall semester. A student may enter at other times with approval of the Department Chairperson.

Scholarship/Title IV Financial Aid/VA Services: Scholarships/Title IV Financial Aid/Veteran's assistance may be available for associate degrees. Certificates and diplomas that fall under this program/area of study **may or may not be eligible** for Scholarship/Title IV Financial Aid/VA Services. Please contact the Financial Aid Office, Student Center, Room 2; Telephone (910) 678-8242. Veterans Services, General Classroom Building, Room 202, (910) 678-8580.



2201 Hull Road
P.O. Box 35236
Fayetteville, NC 28303
(910) 678-8400

SOUTHERN ASSOCIATION OF COLLEGES AND SCHOOLS ON COLLEGES
Fayetteville Technical Community College is accredited by the Southern Association of Colleges and Schools Commission on Colleges (SACSCOC) to award associate degrees, diplomas, and certificates. Questions about the accreditation of Fayetteville Technical Community College may be directed in writing to the Southern Association of Colleges and Schools Commission on Colleges at 1866 Southern Lane, Decatur, Georgia 30033-4097, by calling (404) 679-4500, or by using information available on SACSCOC's website (www.sacscoc.org).

GLOBAL LOGISTICS & DISTRIBUTION MANAGEMENT TECHNOLOGY/ GLOBAL LOGISTICS TRACK



www.faytechcc.edu

*Fayetteville Technical
Community College*

910-678-8400
P.O. Box 35236 • 2201 Hull Road
Fayetteville, NC 28303

An Equal Opportunity Employer

**PROGRAM FACT SHEET
GLOBAL LOGISTICS & DISTRIBUTION
MANAGEMENT TECHNOLOGY/
GLOBAL LOGISTICS TRACK (A25610G)**

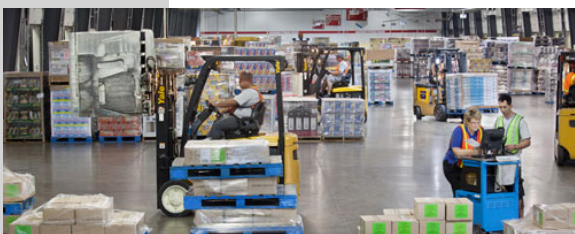
The Global Logistics/Distribution Management Technology curriculum prepares individuals for a multitude of career opportunities in distribution, transportation, warehousing, supply chain, and manufacturing organizations.



Course work includes the international and domestic movement of goods from the raw materials source(s) through production and ultimately to the consumer.

Courses in transportation, warehousing, inventory control, material handling, purchasing, computerization, supply chain operations and federal transportation and OSHA regulations are emphasized.

Graduates should qualify for positions in a wide range of logistics-relation positions in government agencies, manufacturing, and service organizations. Employment opportunities include entry-level purchasing, material management, warehousing, inventory, transportation, international freight, logistics analysts. Upon completion, graduates may be eligible to pursue professional credentials through APICS, AST&L, CSCMP, and ISM.



**FAYETTEVILLE TECHNICAL COMMUNITY COLLEGE
GLOBAL LOGISTICS & DISTRIBUTION MANAGEMENT TECHNOLOGY/
GLOBAL LOGISTICS TRACK (A25610G)**

Effective: Fall 2015

Revised: 05/22/15

Length: 5 Semesters

Prerequisite: High School Diploma, Placement Test Equivalent

Award: Associate in Applied Science

FALL SEMESTER 1

Prefix	No.	Title	Class	Lab	Clinical	Credit
CIS	110	Introduction to Computers	2	2	0	3
or						
CIS	111	Basic PC Literacy	1	2	0	2
ENG	111	Writing and Inquiry	3	0	0	3
LOG	110	Introduction to Logistics	3	0	0	3
LOG	125	Transportation Logistics	3	0	0	3
MAT	143	Quantitative Literacy	2	2	0	3
or						
MAT	152	Statistical Methods I	3	2	0	4
TOTALS			12	4	0	14

SPRING SEMESTER 1

Prefix	No.	Title	Class	Lab	Clinical	Credit
ACC	120	Prin of Financial Accounting	3	2	0	4
BUS	115	Business Law I	3	0	0	3
CTS	130	Spreadsheet	2	2	0	3
LOG	211	Distribution Management	2	2	0	3
LOG	215	Supply Chain Management	3	0	0	3
TOTALS			13	6	0	16

SUMMER SEMESTER 1

Prefix	No.	Title	Class	Lab	Clinical	Credit
BUS	137	Principles of Management	3	0	0	3
MKT	120	Principles of Marketing	3	0	0	3
TOTALS			6	0	0	6



FALL SEMESTER 2

Prefix	No.	Title	Class	Lab	Clinical	Credit
COM	120	Intro Interpersonal Com	3	0	0	3
or						
COM	231	Public Speaking	3	0	0	3
INT	110	International Business	3	0	0	3
LOG	240	Purchasing Logistics	3	0	0	3
MKT	223	Customer Service	3	0	0	3
		Humanities/Fine Arts Elect	3	0	0	3
TOTALS			15	0	0	15

SPRING SEMESTER 2

Prefix	No.	Title	Class	Lab	Clinical	Credit
LOG	235	Import/Export Management	3	0	0	3
LOG	250	Advanced Global Logistics	3	2	0	4
		Soc/Behav Science Elective	3	0	0	3
		Major Elective	3	0	0	3
TOTALS			12	2	0	13

TOTAL REQUIRED CREDITS...64



Work-Based Learning Option: Qualified students may elect to take up to three (3) credit hours of Work-Based Learning in lieu of a Major elective provided they acquire approval from the Work-Based Learning Coordinator and the Department Chairperson.

Note: Students **may not** take an introductory foreign language to fulfill the Humanities/Fine Arts requirement.